

Application Note

AN2105/D
Rev. 1, 11/2001

*Power-On, Clock Selection,
and Noise Reduction
Techniques for the Motorola
MC68HC908GP32*



By Yan-Tai Ng
Applications Engineering
Microcontroller Division
Hong Kong

This application note describes power-on/power-down, clock selection, and noise reduction techniques for applications using the Motorola MC68HC908GP32 MCU device, hereafter referred as the GP32.

For full device specification, please refer to the datasheet, Motorola order number: MC68HC908GP32/H.

Introduction

The GP32 is a popular general purpose device amongst Motorola's HC08 family of Microcontrollers. It has a new generation FLASH memory array, the 32k-bytes can be programmed in less than one second.

The versatility of the GP32 makes the device suitable for many applications and sometimes, finding itself in some very noisy environments. These noise and interference problems are made worse by poor circuit design and PCB layout, resulting in intermittent MCU failures and even complete breakdown.

To avoid these undesirable effects, there are some basic techniques that can be applied during circuit design and PCB layout. The following text describes some recommendations.

Power-Up and Power-Down Requirements

The precautions described below should be followed for MCU power-up and power-down, otherwise unpredictable MCU behavior may occur.

Power supply rise-time

Power supply fall-time

Meeting power-on reset requirements

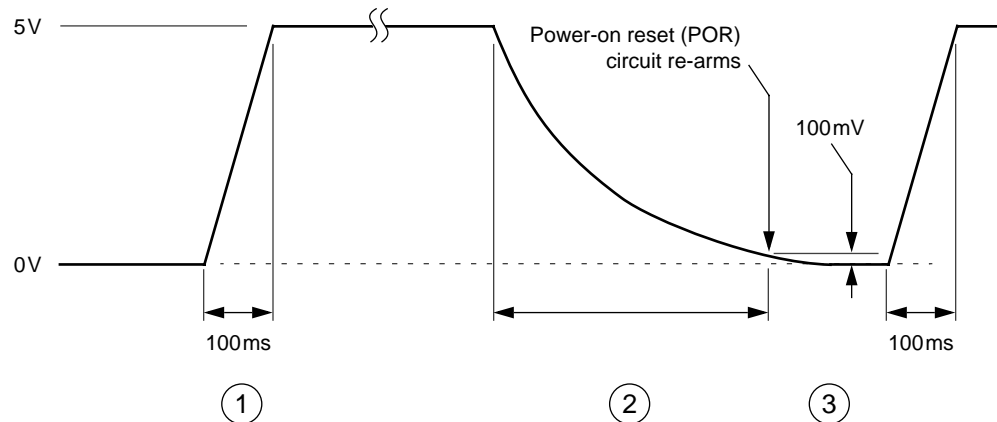


Figure 1. Power Supply Power-Up/Down Requirements

1. At power-up, supply voltage rise-time should be as short as possible; less than 143ms for 5V operation (143ms is calculated from the POR rise-time ramp rate).
2. At power-down, supply voltage should drop as quickly as possible to avoid the MCU operating with a supply voltage that is not in the MCU operating range.
3. Before power-up again, supply voltage must fall below 100mV for the GP32 power-on reset circuit to rearm.

In addition, an orderly power-up can be improved by keeping the external reset pin (\overline{RST}) pulled low until supply voltage has reached its operating level.

Improper power-up or power-down conditions cause problems for all MCUs, not just the GP32. Since the MCU contains a microprocessor and running a program, an improper power-up may cause the MCU to behave erratically and execute runaway codes.

The data related to the above requirements are specified in the GP32 datasheet. They are reproduced in the table below, with explanatory notes in the following paragraphs.

	Symbol	Minimum		Typical		Maximum		Unit
Operating voltage	V_{DD}	5	3	5	3	5	3	V
POR rearm voltage	V_{POR}	0	0	—	—	100	100	mV
POR reset voltage	V_{PORRST}	0	0	700	700	800	800	mV
POR rise-time ramp rate	R_{POR}	0.035	0.02	—	—	—	—	V/ms

Data extracted from MC68HC908GP32 datasheet rev. 5.

POR rearm voltage This parameter indicates the voltage where the power-on reset (POR) circuit becomes ready again (rearms) when the supply voltage falls. For a proper POR in a power-down followed by a power-up situation, the supply voltage must be allowed to fall below 100mV before a power-up.

POR reset voltage This parameter indicates the supply voltage where the POR circuit activates and performs a MCU power-on reset.

POR rise-time ramp rate This parameter indicates supply voltage rise-time requirement for the POR circuit to operate successfully. The V_{DD} rise-time must be faster than the quoted POR rise-time minimum.

Choosing the MCU Reference Clock Frequency

Other than choosing the bus frequency, clocks for other GP32 modules are also important. Some modules require a minimum operating frequency, some depend on the bus frequency, and some depend on the input reference frequency.

Sometimes, the choice of the input reference frequency may be a compromise; so that it satisfies the clock requirements of the GP32 modules for a particular application.

Figure 2 shows the clock distribution to the modules inside the GP32.

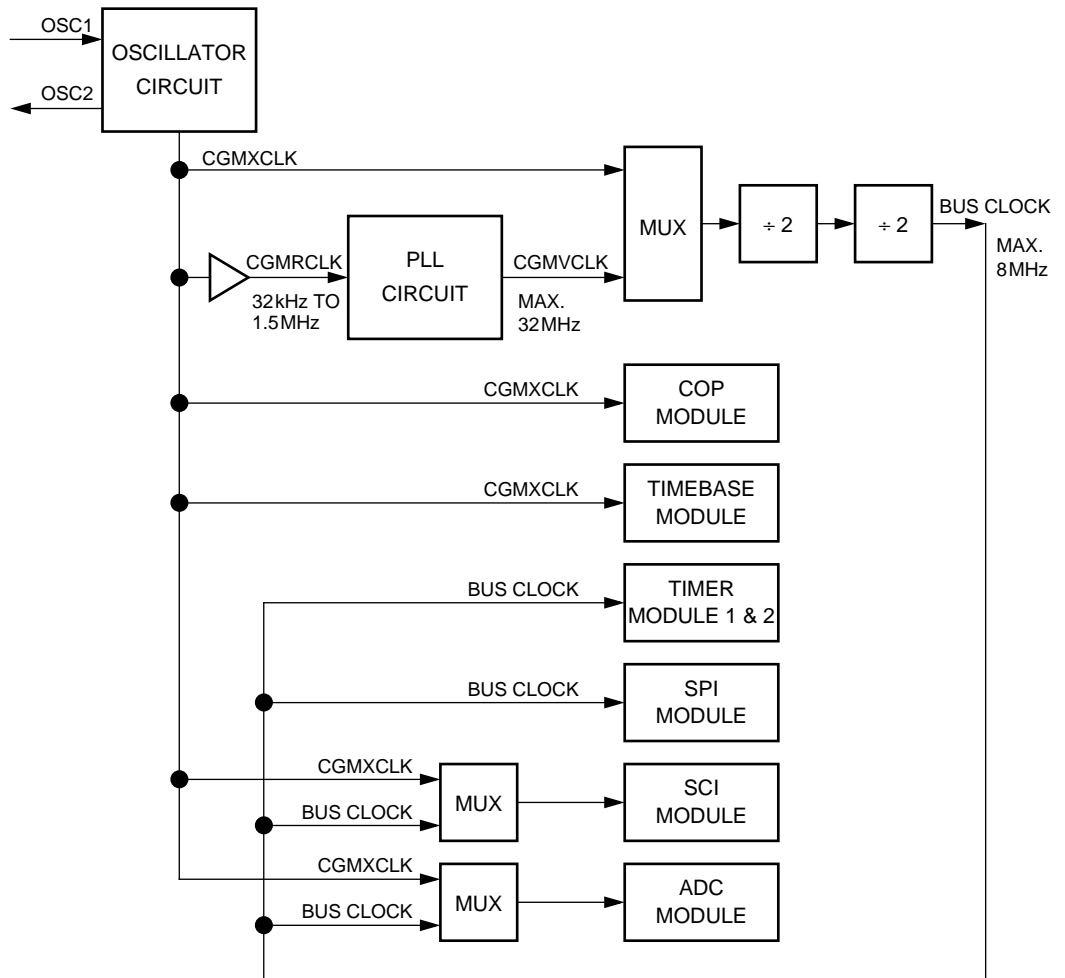


Figure 2. GP32 Clock Distribution

Generating the MCU Reference Clock

A reliable, stable and clean reference clock input is very important in MCU application designs, since the clock is the heart of the MCU.

The recommended method to generate the system clocks for GP32 is to use a low frequency input reference from a 32.768kHz crystal connected across OSC1 and OSC2 pins, and use the GP32's clock generation module (the PLL circuit) to generate the high frequency clock. This method generates less noise, with the higher frequencies contained within the MCU. A low frequency crystal is also cheaper in cost.

Crystal connection between OSC1 and OSC2 pins

Use the following components when using a 32.768kHz crystal. This is the recommended crystal oscillator configuration.

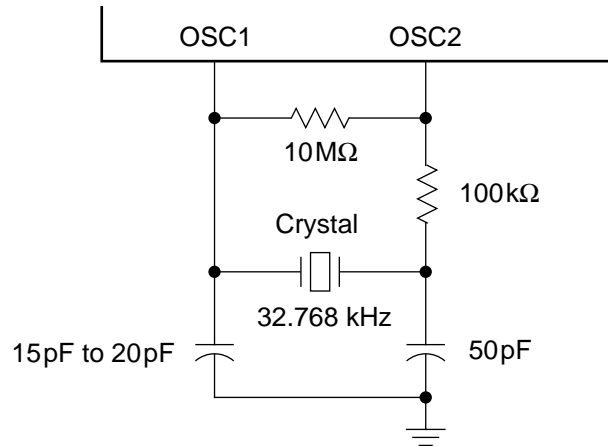


Figure 3. Components for 32kHz Oscillation

The GP32's PLL circuit uses this 32.768kHz reference clock for generating the higher frequency bus clock (see page 7). Although the GP32's PLL can accept a reference clock from 32kHz to 1.5MHz, the 32.768kHz is chosen because it is an ideal frequency for driving the timebase module (see Figure 2), for real-time clock generation.

Crystal oscillator start-up time

From Figure 3, the 10MΩ feedback resistor is used as the oscillator inverter, biased to $\frac{1}{2}V_{DD}$, to set up a high gain inverter amplifier. For the 32.768kHz crystal oscillator, a 100kΩ resistor with 50pF capacitor are added for oscillator start-up time delay. Unlike high frequency oscillators (greater than 1MHz), the 32.768kHz oscillator cycle is 30.52μs, which needs significant time for start-up. Figure 4 shows the typical oscillator start-up time for the 32.768kHz crystal oscillator when power is applied. The typical delay is 130ms.

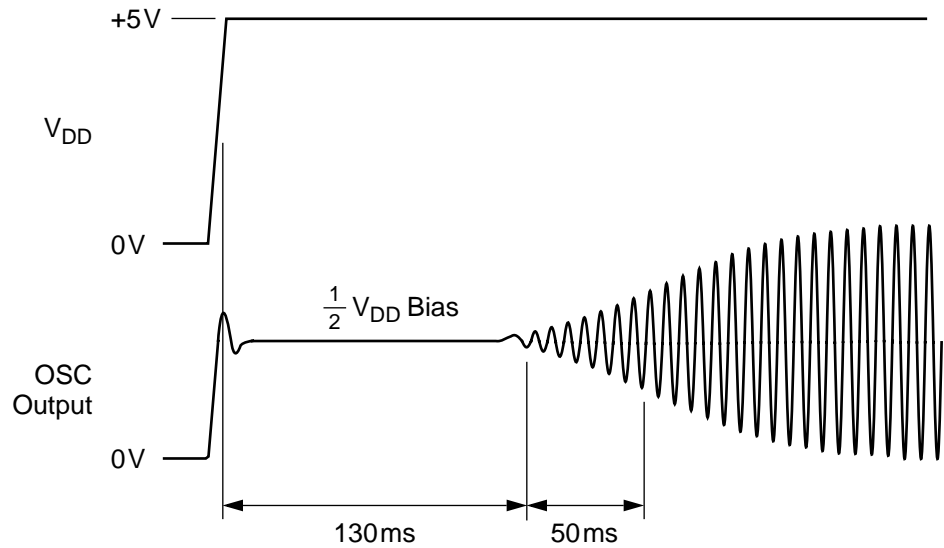


Figure 4. Crystal Oscillator Start-Up

**Alternative clock source:
External clock drive into OSC1 pin**

The alternative to the crystal oscillator connection is to use a square wave from an external oscillator, driven directly into the OSC1 pin, and leaving OSC2 pin unconnected. The square wave should have a 50% duty cycle. Using this method, the maximum clock input is 32MHz. Note that the PLL circuit cannot use a 32MHz input clock. The PLL input reference clock range is from 32kHz to 1.5MHz.

With the PLL off, a 32MHz clock input divides to an 8MHz bus clock. Note also that this 32MHz clock feeds to the COP and timebase modules (see Figure 2), giving a relatively short COP period.

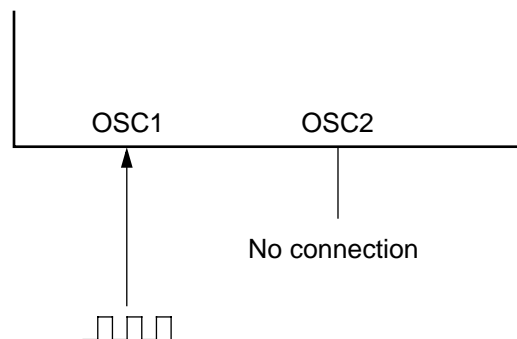


Figure 5. External Oscillator Drive to OSC1

Generating a High Bus Frequency from a Low Frequency Reference

The GP32's PLL can generate up to the maximum bus frequency of 8MHz using a 32.768kHz clock reference.

To be precise, the PLL accepts a reference clock between 32kHz and 100kHz. A prescaler is available for dividing the oscillator clock to within the accepted range. This prescaler has an integer value of divide-by-1 to divide-by-15. Therefore, the maximum input reference frequency allowed is 1.5MHz.

Selecting filter components for the PLL circuit

Use either of the following filter networks for connection to the GP32's CGMXFC pin.

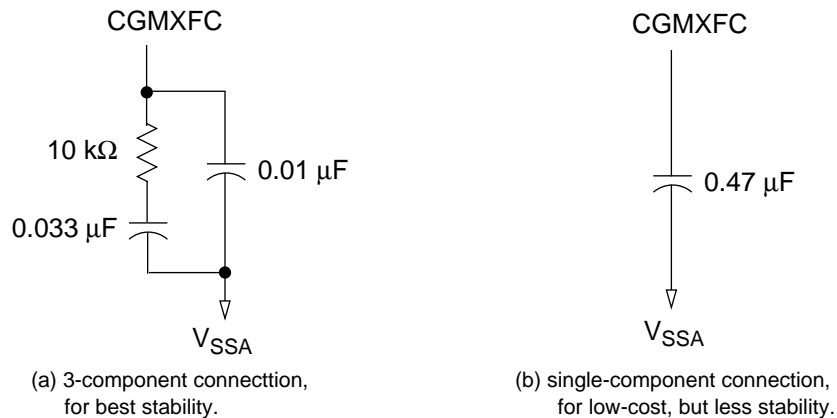


Figure 6. Filter Components for PLL

VCO drives in PLL circuit

Figure 7 shows a diagrammatic representation of the current drives into the voltage controlled oscillator (VCO) for frequency tracking.

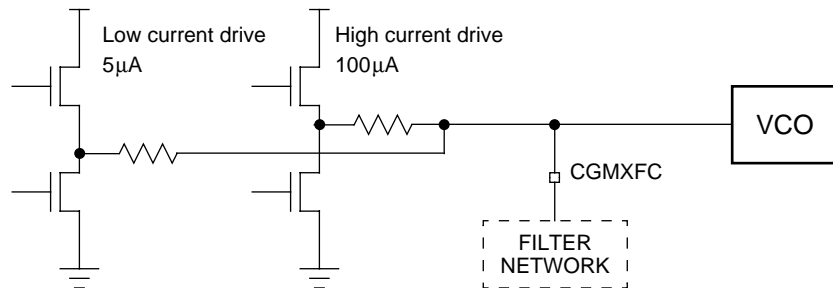


Figure 7. VCO Drives

The typical PLL lock response for the two filter networks are shown in Figure 8 (a) and (b).

PLL lock response Figure 8 (a) and (b) show actual plots for the PLL lock time, for the two configurations of the external filter.

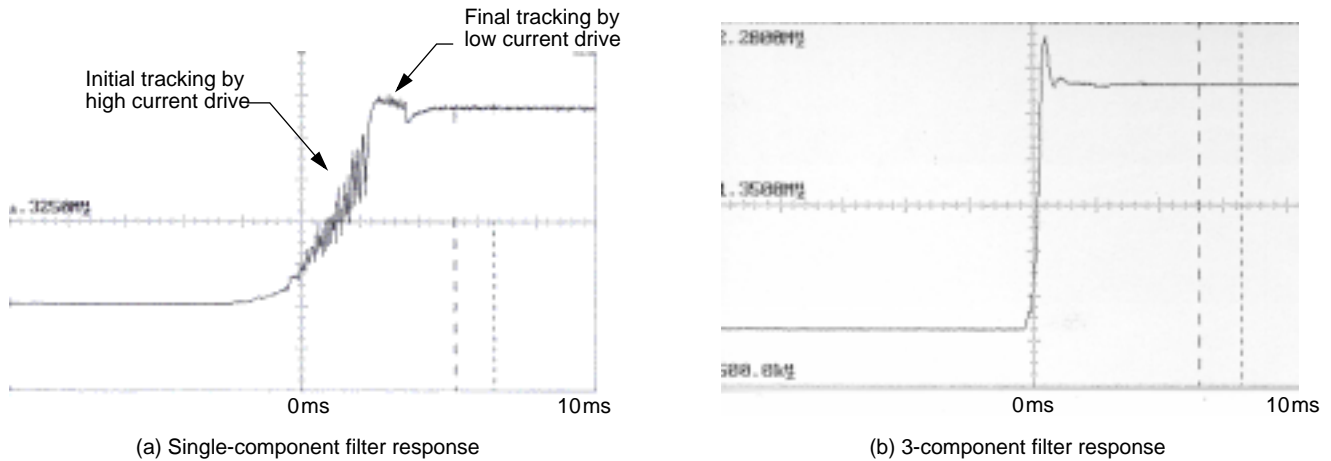


Figure 8. PLL Lock Response with Different Component Configurations

Programming the phase-lock loop

The following code listing is for a VCO frequency of 32MHz, from a 32.768kHz clock reference to the MCU. The 32MHz divides to an 8MHz bus clock.

Note that the PLL can only be programmed when it is off. Therefore, always clear the PLLON bit before writing to the PLL programming registers.

```

PCTL EQU $0036 ; PLL Control Register
PBWC EQU $0037 ; PLL Bandwidth Control Register
PMSH EQU $0038 ; PLL Multiplier Select Register High
PMSL EQU $0039 ; PLL Multiplier Select Register Low
PMRS EQU $003A ; PLL VCO Range Select Register
PMDS EQU $003B ; PLL Reference Divider Select Register

BRCLR 5,PCTL ; Turn Off PLL

LDA #$00 ; Set P=0 for PRE[1:0]
STA PCTL
LDA #$02 ; Set E=2 for VPR[1:0]
STA PCTL
LDA #$D1 ; Set N=977 for MUL[11:0]
STA PMSL
LDA #$03
STA PMSH
LDA #$D0 ; Set L=208 for VRS[7:0]

```

```

STA    PMRS
LDA    #$01          ; Set R=1 for RDS[3:0]
STA    PMDS
BSET   5,PCTL        ; Turn On PLL
BSET   7,PBWC        ; Enable Auto Bandwidth Control
BRCLR  6,PBWC,*      ; Loop until LOCK bit set
BSET   4,PCTL        ; Select VCO clock as system clock
NOP
NOP

```

For programming the VCO to other frequencies, please refer to *Programming the PLL* section in the GP32 datasheet (rev. 5 datasheet, section 7.4.6, page 113).

PCB Layout for Critical Signals

Power supply decoupling

Connect these critical components as close as possible to the MCU and with the shortest return path to the MCU ground pin. Each V_{DD} pin should be decoupled to ground with its own capacitors.

PLL filter network connections

Crystal oscillator connections

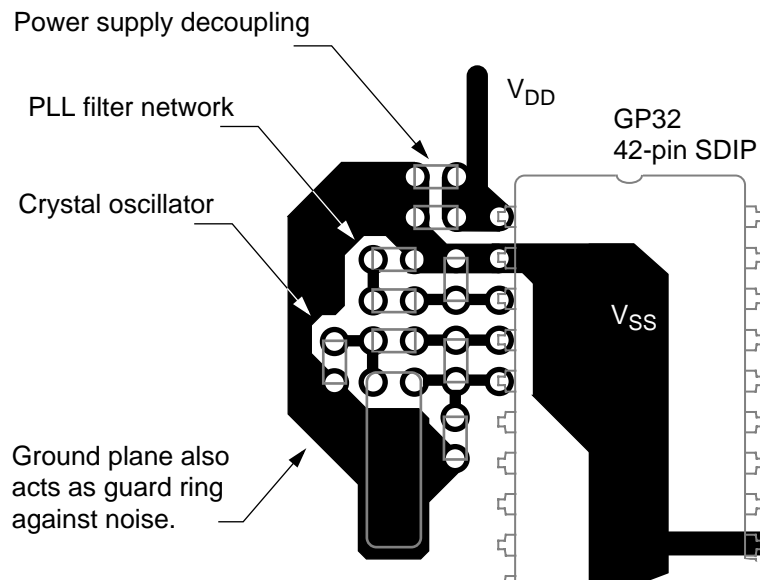


Figure 9. Critical Component PCB Layout

Application Note

Grounding multiple V_{SS}

Connect device ground pins together at the center with the shortest path.

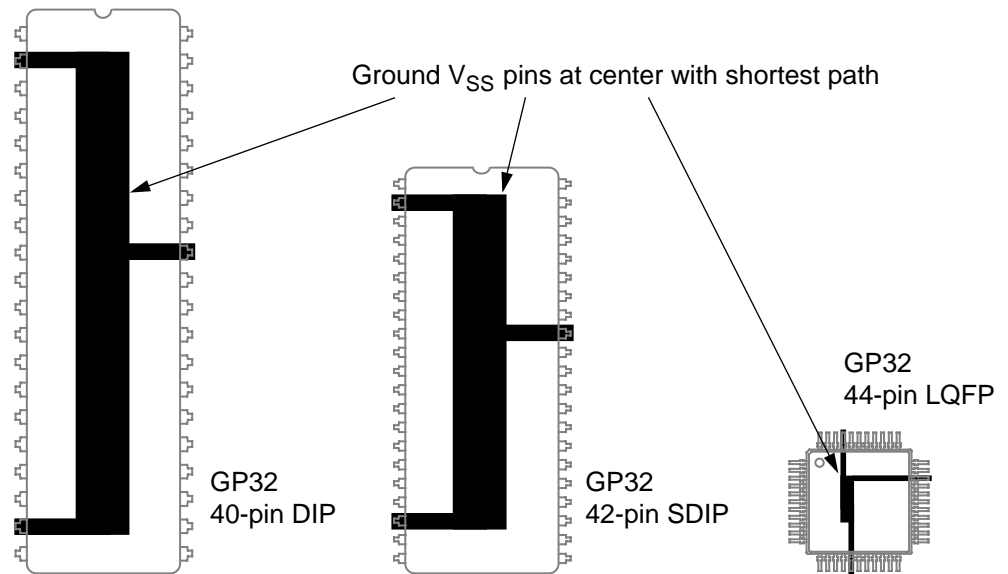


Figure 10. Grounding Multiple V_{SS}

Ground return for high-current devices

Keep high current return ground paths separate from low current return ground paths, and join them at a single point near the regulator or the power supply input.

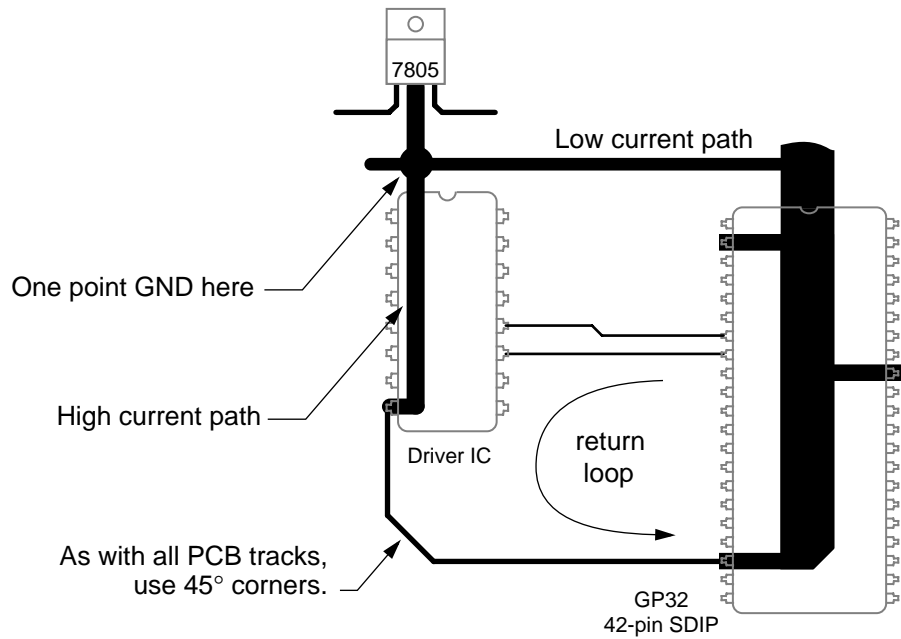


Figure 11. Ground Return for High Current Devices

Long signal line to ADC pins

Terminate a long PCB trace carrying analog signal with a decoupling capacitor — at the MCU ADC input pin.

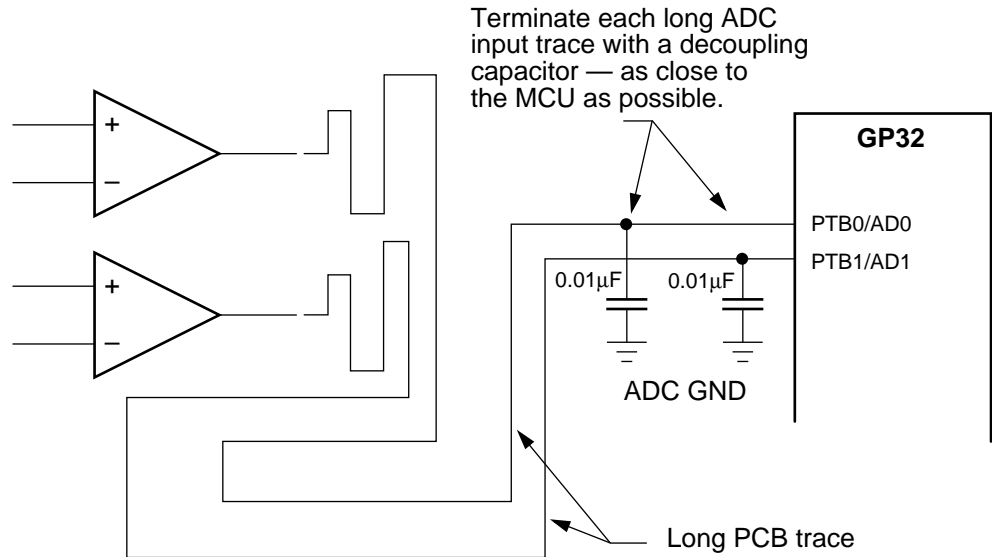
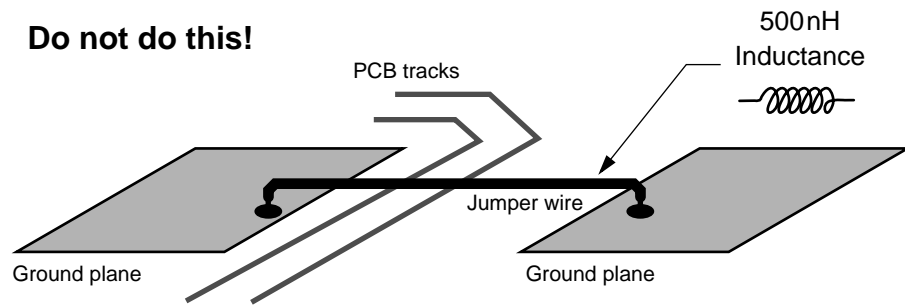


Figure 12. Long Analog Paths

Connecting multiple ground planes

Avoid connecting multiple ground planes together using a single wire, as shown in Figure 13.



$$V = L \frac{di}{dt}$$

$$L = 500nH, I = 10mA, t = 5ns$$

$$V = 1 \text{ volts}$$

Figure 13. Avoid Connecting Multiple Ground Planes

The single wire will have inductance, causing a potential difference between the two ground planes.

Application Note

HOW TO REACH US:

USA/EUROPE/LOCATIONS NOT LISTED:

Motorola Literature Distribution;
P.O. Box 5405, Denver, Colorado 80217
1-303-675-2140 or 1-800-441-2447

JAPAN:

Motorola Japan Ltd.; SPS, Technical Information Center,
3-20-1, Minami-Azabu Minato-ku, Tokyo 106-8573 Japan
81-3-3440-3569

ASIA/PACIFIC:

Motorola Semiconductors H.K. Ltd.;
Silicon Harbour Centre, 2 Dai King Street,
Tai Po Industrial Estate, Tai Po, N.T., Hong Kong
852-26668334

TECHNICAL INFORMATION CENTER:

1-800-521-6274

HOME PAGE:

<http://www.motorola.com/semiconductors>

Information in this document is provided solely to enable system and software implementers to use Motorola products. There are no express or implied copyright licenses granted hereunder to design or fabricate any integrated circuits or integrated circuits based on the information in this document.

Motorola reserves the right to make changes without further notice to any products herein. Motorola makes no warranty, representation or guarantee regarding the suitability of its products for any particular purpose, nor does Motorola assume any liability arising out of the application or use of any product or circuit, and specifically disclaims any and all liability, including without limitation consequential or incidental damages. "Typical" parameters which may be provided in Motorola data sheets and/or specifications can and do vary in different applications and actual performance may vary over time. All operating parameters, including "Typicals" must be validated for each customer application by customer's technical experts. Motorola does not convey any license under its patent rights nor the rights of others. Motorola products are not designed, intended, or authorized for use as components in systems intended for surgical implant into the body, or other applications intended to support or sustain life, or for any other application in which the failure of the Motorola product could create a situation where personal injury or death may occur. Should Buyer purchase or use Motorola products for any such unintended or unauthorized application, Buyer shall indemnify and hold Motorola and its officers, employees, subsidiaries, affiliates, and distributors harmless against all claims, costs, damages, and expenses, and reasonable attorney fees arising out of, directly or indirectly, any claim of personal injury or death associated with such unintended or unauthorized use, even if such claim alleges that Motorola was negligent regarding the design or manufacture of the part.



Motorola and the Stylized M Logo are registered in the U.S. Patent and Trademark Office. digital dna is a trademark of Motorola, Inc. All other product or service names are the property of their respective owners. Motorola, Inc. is an Equal Opportunity/Affirmative Action Employer.

© Motorola, Inc. 2001