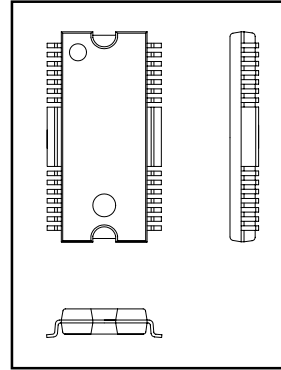
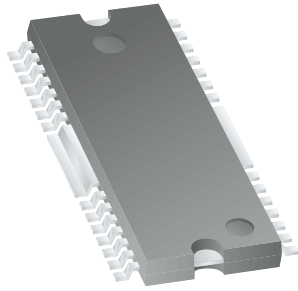


SSOPH-28 (375SG2) Package Dimensions



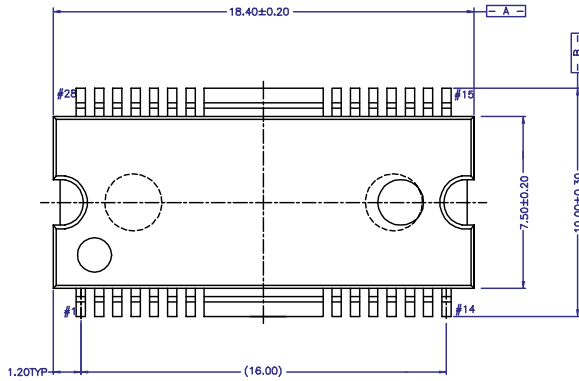
SSOPH-28 (375SG2)



Scale 1:1 on letter size paper

Dimensions shown below are in:
inches [millimeters]

Part Weight per unit (gram): 0.65



NOTE ;

1. CONTROLLING DIMENSIONS ARE MM. () IS REFERENCE.
2. DIMENSIONING AND TOLERANCING PER ANSI Y 14.5M - 1982.
3. "A" AND "B" ARE REFERENCE DATUMS ON THE MOLDED BODY AND DO NOT INCLUDE MOLD FLASH/PROTRUSIONS. MOLD FLASH/PROTRUSIONS AT "A" SHALL NOT EXCEED $0.152\text{MM}(0.006")$ PER SIDE. INTER-LEAD FLASH/PROTRUSIONS AT "B" SHALL NOT EXCEED $0.254\text{MM}(0.010")$ PER SIDE.
4. PIN NUMBERS START WITH PIN #1 AND CONTINUE COUNTERCLOCKWISE TO PIN #28 WHEN VIEWED FROM TOP.

